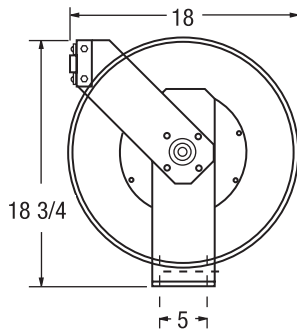
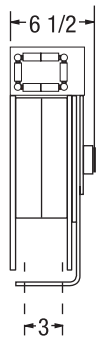


HOSETRACT

HOSE REELS

Inlet - 1/2" FTP Max. Temp. - 200°F



Reels shipped standard of hose payout position. For ceiling mount add suffix sc.

Mounting Slots
1/2" wide x 3/4" deep
for max 7/16" dia. bolt



Available in
Powder Coat or (304)
Stainless Steel



For 1/4", 3/8" and 1/2" Hose I.D.

C Series

LOW PRESSURE reels are ideally suited for plant maintaining, service trucks or many other industrial functions where hose storage is a problem. Standard hose for air, water, and water based solutions. Other hoses available upon request.

	Model Number	Operating Pressure	Hose I.D.	Hose Length	Shipping Weight
	LC-300*	1000 PSI	3/8 IN.	—	46#
	LC-340	300 PSI	3/8 IN.	40 FT.	49#
	LC-350	300 PSI	3/8 IN.	50 FT.	50#
	LC-370	300 PSI	3/8 IN.	70 FT.	54#
	LC-500*	1000 PSI	1/2 IN.	—	46#
	LC-540	300 PSI	1/2 IN.	40 FT.	53#
	LC-550	300 PSI	1/2 IN.	50 FT.	57#

MEDIUM PRESSURE reels are required when higher pressures are involved for air, water, or heavier oils. Standard 1-wire braid hose furnished.

	MC-300*	4000 PSI	3/8 IN.	—	47#
	MC-340	2500 PSI	3/8 IN.	40 FT.	56#
	MC-350	2500 PSI	3/8 IN.	50 FT.	58#
	MC-500*	4000 PSI	1/2 IN.	—	47#
	MC-530	2500 PSI	1/2 IN.	30 FT.	56#
	MC-540	2500 PSI	1/2 IN.	40 FT.	58#
	MC-550	2500 PSI	1/2 IN.	50 FT.	61#

HIGH PRESSURE reels are used exclusively where grease is being applied as in lube applications for off-road service or garage lube systems. Standard 2-wire braid hose furnished.

	HC-200*	8000 PSI	1/4 IN.	—	46#
	HC-240	5000 PSI	1/4 IN.	40 FT.	56#
	HC-250	5000 PSI	1/4 IN.	50 FT.	59#
	HC-300*	8000 PSI	3/8 IN.	—	46#
	HC-330	4000 PSI	3/8 IN.	30 FT.	56#
	HC-340	4000 PSI	3/8 IN.	40 FT.	58#
	HC-350	4000 PSI	3/8 IN.	50 FT.	62#

* Models without hose.



HOSETRACT 