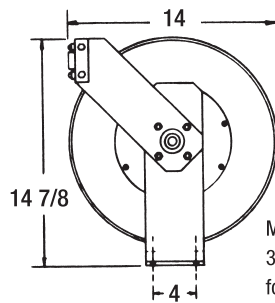
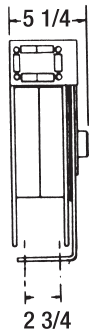


HOSETRACT

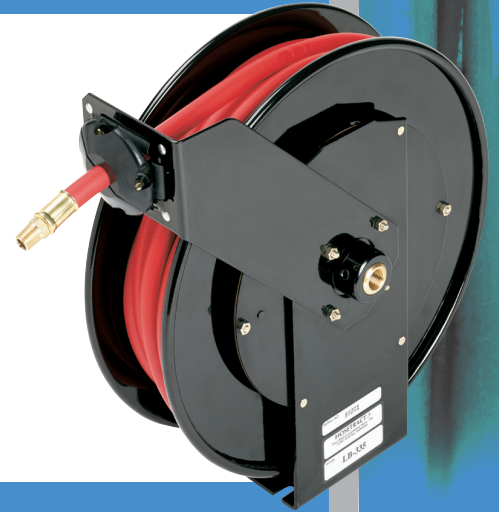
HOSE REELS

Inlet — 3/8" FPT Max. Temp. — 200°F

Reels shipped standard of hose payout position. For ceiling mount add suffix sc.



Mounting Slots
3/8" wide x 3/4" deep
for max 5/16" dia. bolt






For 1/4" and 3/8" Hose I.D.

B Series

The **B Series Reels** are applied well where shorter, low volume hoses are used, such as auto-truck service garages for all air applications as well as anti-freeze, motor oil, ATF and grease. The all brass main shaft and swivel assure less corrosion for extended seal life in the low pressure rating (up to 1000 PSI).

LOW PRESSURE Air, water, anti-freeze.

	Model Number	Operating Pressure	Hose I.D.	Hose Length	Shipping Weight
	LB-200*	1000 PSI	1/4 IN.	—	25#
	LB-225	300 PSI	1/4 IN.	25 FT.	26#
	LB-230	300 PSI	1/4 IN.	30 FT.	27#
	LB-235	300 PSI	1/4 IN.	35 FT.	28#
	LB-240	300 PSI	1/4 IN.	40 FT.	29#
	LB-250	300 PSI	1/4 IN.	50 FT.	30#
	LB-300*	1000 PSI	3/8 IN.	—	25#
	LB-320	300 PSI	3/8 IN.	20 FT.	26#
	LB-325	300 PSI	3/8 IN.	25 FT.	27#
	LB-330	300 PSI	3/8 IN.	30 FT.	27#
	LB-335	300 PSI	3/8 IN.	35 FT.	28#
	LB-500*	1000 PSI	1/2 IN.	—	25#

MEDIUM PRESSURE Motor oil, ATF. Standard 1-wire braid hose furnished.

	MB-300*	2500 PSI	3/8 IN.	—	22#
	MB-320	2500 PSI	3/8 IN.	20 FT.	29#
	MB-325	2500 PSI	3/8 IN.	25 FT.	30#
	MB-330	2500 PSI	3/8 IN.	30 FT.	31#
	MB-335	2500 PSI	3/8 IN.	35 FT.	32#

HIGH PRESSURE Grease. Standard 2-wire braid hose furnished.

	HB-200*	8000 PSI	1/4 IN.	—	23#
	HB-220	5000 PSI	1/4 IN.	20 FT.	29#
	HB-225	5000 PSI	1/4 IN.	25 FT.	30#
	HB-230	5000 PSI	1/4 IN.	30 FT.	31#
	HB-235	5000 PSI	1/4 IN.	35 FT.	32#

* Models without hose.



HOSETRACT 